

ENZO  
CLASSIC

PRODUCT CATALOGUE VOL. 05 (2014-2015)



<b>01</b>	<b>NEW SERIES</b>
<b>02</b>	<b>INTRODUCTION</b>
<b>04</b>	<b>T/C SINGLE KNIT</b>
06	4000 CHILDREN PLAIN ROUND NECK (30 T/C SINGLE KNIT)
07	1000 PLAIN ROUND NECK (26 T/C SINGLE KNIT)
08	3000 PLAIN ROUND NECK (30 T/C SINGLE KNIT)
09	1200N LONG SLEEVE PLAIN ROUND NECK (26 T/C)
	2200 LONG SLEEVE PLAIN POLO (26 T/C)
10	1300 DOUBLE LONG SLEEVE ROUND NECK (26 T/C)
	2046 PLAIN POLO TEE (30 T/C)
11	2300 DOUBLE LONG SLEEVE POLO (26 T/C)
12	1012 CUT & SEW ROUND NECK (30 T/C SINGLE KNIT)
13	2125 POLO WITH PIPING (26 T/C SINGLE KNIT)
14	<b>1028 RAGLAN SLEEVE ROUND NECK (30 T/C SINGLE KNIT)</b>
16	<b>1066 CUT &amp; SEW ROUND NECK (30 T/C SINGLE KNIT)</b>
17	2000 PLAIN POLO (26 T/C SINGLE KNIT)
18	<b>2816 CUT &amp; SEW POLO (26 T/C SINGLE KNIT)</b>
20	1038 CUT & SEW V NECK (30 T/C SINGLE KNIT)
21	2520 POLO WITH PIPING (26 T/C SINGLE KNIT)
23	2093 SHORT / LONG SLEEVE POLO (26 T/C SINGLE KNIT)
24	1709 CUT & SEW ROUND NECK (30 T/C SINGLE KNIT)
25	2085 CUT & SEW POLO (26 T/C SINGLE KNIT)
27	2075 CUT & SEW POLO (26 T/C SINGLE KNIT)
<b>28</b>	<b>LACOSTE POLO</b>
30	2160 LACOSTE STANDARD POLO
31	2183 LACOSTE MINI POLO
33	<b>2572 LACOSTE CUT &amp; SEW POLO</b>



ENZO PRODUCT CATALOGUE 2014/15

# CONTENTS

<b>34</b>	<b>PK FABRIC</b>
36	2101 PK PLAIN POLO (26 T/C PK)
	2100 PK PLAIN POLO (26 T/C PK)
37	2141 POLO WITH PIPING (26 T/C PK)
<b>38</b>	<b>2588 CUT &amp; SEW POLO (26 T/C PK)</b>
39	2111 SHORT/LONG SLEEVE POLO (26 T/C PK)
40	2521 SHORT/LONG SLEEVE POLO WITH PIPING (30 T/C PK)
42	2121 SHORT/LONG SLEEVE POLO (26 T/C PK)
43	2079 POLO WITH TIPPING & PIPING (26 T/C PK)
44	2135 POLO WITH PIPING ON SHOULDER (30 T/C PK)
45	2088 CUT & SEW POLO (26 T/C PK)
<b>46</b>	<b>MICROFIBER QUICK-DRY</b>
48	MICROFIBER-MATERIAL
<b>50</b>	<b>2260 SIMPLE POLO (MICROFIBER LACOSTE)</b>
<b>51</b>	<b>2283 SIMPLE MINI POLO (MICROFIBER LACOSTE)</b>
<b>52</b>	<b>1796N CUT &amp; SEW V NECK (M.F. INTERLOCK)</b>
54	1815 MICROFIBER PLAIN ROUND NECK (M.F. KM286)
56	1018 CUT & SEW ROUND NECK (M.F. 4090)
57	2068 MICROFIBER ZIP MOCK NECK (M.F. 4090)
<b>59</b>	<b>1804 CUT &amp; SEW ROUND NECK (M.F. STRIPE DRILL)</b>
60	2010 CUT & SEW POLO (M.F. OTTOMAN)
61	2055 CUT & SEW POLO (M.F. 3098)
<b>62</b>	<b>2714 CUT &amp; SEW POLO (M.F. FLAT KNITTED)</b>
64	2522 CUT & SEW POLO WITH PIPING (M.F. MINI WAFFLE)
65	2050 CUT & SEW POLO (M.F. 4090)
66	2069N CUT & SEW POLO (M.F. 0866)
<b>69</b>	<b>2724 UNBALANCE CUT &amp; SEW POLO (M.F. STRIPE DRILL)</b>
<b>70</b>	<b>2830 CUT &amp; SEW ZIP MOCK NECK (M.F. STRIP DRILL)</b>
73	2802 CUT & SEW MANDARIN COLLAR TEE WITH ZIP (M.F. 4090)
74	2708 CUT & SEW POLO WITH PIPING (MINI EYELET)
75	1708 ADULT & CHILDREN CUT & SEW ROUND NECK WITH PIPING (MINI EYELET)
<b>76</b>	<b>MUSLIMAH</b>
<b>82</b>	<b>ENZO CLASSIC</b>
83	2545 POLO WITH PIPING (45 T/C INTERLOCK)
84	1818 PLAIN ROUND NECK (QUICK DRY COTTON)
86	<b>2573 CUT &amp; SEW POLO (45 T/C INTERLOCK)</b>
88	2073 CUT & SEW POLO (45 T/C INTERLOCK)
89	40 FULLY COMB COTTON FOR CUSTOM MADE ONLY
<b>90</b>	<b>SOCCER SHORT</b>
	<b>OFFICE JACKET</b>
<b>91</b>	<b>REVERSIBLE WINDBREAKER</b>
<b>92</b>	<b>CAPS</b>
<b>94</b>	<b>PRODUCTS DETAIL</b>
<b>95</b>	<b>MEASUREMENTS</b>



1804 | PAGE 59



2260 | PAGE 50

2724 | PAGE 69



2572 | PAGE 33

2573 | PAGE 86



1028 | PAGE 14



1066 | PAGE 16



2816 | PAGE 18



2588 | PAGE 38



1796N | PAGE 52



8023 | PAGE 77



8021 | PAGE 81



1818 | PAGE 84

# 2014 NEW SERIES



# ENZO

## WE FEEL PROUD TO SAY “WE ARE MADE IN MALAYSIA”

As one of the major garment traders and manufacturer across the industry, we have more than 20 years experience in garment producing. With a team of experienced workers, Enzo also pursue the modernize manufacturing facility and equipment to ensure product quality and delivery reliability. We know what is needed to rough out in challenging the customers' ever changing need.

Even be in such a depressive market, we insist to produce all the apparel 100% locally in our own factory. This allow us to gain competitive advantage in quality control over knitting, dyeing, silkscreen printing, embroidery and sewing of the garment. Meanwhile, our specialists continuously communicate and work together with our textile supplier in order to develop new kind of textile and to improve the hand feel of fabric for more comfortable apparel.

We keep large quantity of ready made products for customer's urgent need at all reasonable price.

# T/C

## T/C SINGLE KNITTED FABRIC POLYESTER 65% + COTTON 35%

Modern TC fabric is a very popular material with its reasonable quality in used for usual work wear, uniform and corporate apparel. Good quality of the dye stuff allows us to achieve

high grade of color-fastness and low shrinkage rate. With its polyester based characteristic, TC fabric is more durable compare to other fabric while maintain its low price.



# 4000 CHILDREN PLAIN ROUND NECK (30 T/C SINGLE KNIT)

SIZES | 28/30/32/34/36



# 1000 PLAIN ROUND NECK (26 T/C SINGLE KNIT)

SIZES | S/M/L/XL/2XL/3XL



# 3000 PLAIN ROUND NECK (30 T/C SINGLE KNIT)

SIZES | S/M/L/XL/2XL/3XL



CODE | 3000  
COLOR | YELLOW

CODE | 3000  
COLOR | ORANGE

CODE | 3000  
COLOR | RED

CODE | 3000  
COLOR | MAROON

CODE | 3000  
COLOR | HOT PINK



CODE | 3000  
COLOR | LGREEN

CODE | 3000  
COLOR | ROYAL BLUE

CODE | 3000  
COLOR | DK.PURPLE

CODE | 3000  
COLOR | NAVY

CODE | 3000  
COLOR | BLACK

# 1200N LONG SLEEVE PLAIN ROUND NECK (26 T/C)

SIZES | S/M/L/XL/2XL/3XL



CODE | 1200N  
COLOR | YELLOW

CODE | 1200N  
COLOR | NAVY

CODE | 1200N  
COLOR | RED

CODE | 1200N  
COLOR | BLACK

# 2200 LONG SLEEVE PLAIN POLO (26 T/C)

SIZES | S/M/L/XL/2XL/3XL



CODE | 2200  
COLOR | MAROON

CODE | 2200  
COLOR | NAVY

CODE | 2200  
COLOR | BLACK

# 1300 DOUBLE LONG SLEEVE ROUND NECK (26 T/C)

SIZES | S/M/L/XL/2XL/3XL



CODE | 1300  
COLOR | RED / BLACK



CODE | 1300  
COLOR | ORANGE / BLACK



CODE | 1300  
COLOR | LGREEN / BLACK

# 2300 DOUBLE LONG SLEEVE POLO (26 T/C)

SIZES | S/M/L/XL/2XL/3XL



CODE | 2300  
COLOR | ORANGE / BLACK



CODE | 2300  
COLOR | RED / BLACK



CODE | 2300  
COLOR | LGREEN / BLACK

# 2046 PLAIN POLO TEE (30 T/C)

SIZES | S/M/L/XL/2XL/3XL



CODE | 2046  
COLOR | BLACK



CODE | 1300  
COLOR | NAVY / RED



CODE | 2300  
COLOR | NAVY / RED



CODE | 2300  
COLOR | BLACK / LGREEN



# 1012 CUT & SEW ROUND NECK (30 T/C SINGLE KNIT)

CHILDREN SIZES | 28 / 30 / 32 / 34 / 36    ADULT SIZES | S / M / L / XL / 2XL / 3XL



CODE | 1012  
COLOR | TURQ / WHITE

CODE | 1012  
COLOR | WHITE / ROYAL BLUE



CODE | 1012  
COLOR | LGREEN / BLACK

CODE | 1012  
COLOR | YELLOW / NAVY



CODE | 1012  
COLOR | NAVY / RED

CODE | 1012  
COLOR | RED / NAVY



CODE | 1012  
COLOR | BLACK / ORANGE

CODE | 1012  
COLOR | ORANGE / BLACK

# 2125 POLO WITH PIPING (26 T/C SINGLE KNIT)

SIZES | S / M / L / XL / 2XL / 3XL



CODE | 2125  
COLOR | MARIGOLD / BLACK



CODE | 2125  
COLOR | LGREEN / BLACK



CODE | 2125  
COLOR | NAVY / RED



CODE | 2125  
COLOR | MAROON / NAVY

# 1028 RAGLAN SLEEVE ROUND NECK (30 T/C SINGLE KNIT)

CHILDREN SIZES | 28 / 30 / 32 / 34 / 36    ADULT SIZES | S / M / L / XL / 2XL / 3XL



CODE | 1028  
COLOR | WHITE / HOT PINK



CODE | 1028  
COLOR | YELLOW / BLACK



CODE | 1028  
COLOR | RED / BLACK



CODE | 1028  
COLOR | L.GREEN / NAVY



CODE | 1028  
COLOR | TURQ / NAVY



CODE | 1028  
COLOR | DK.PURPLE / MELANGE



# 1066 CUT & SEW ROUND NECK (30 T/C SINGLE KNIT)

SIZES | XS/S/M/L/XL/2XL/3XL



CODE | 1066  
COLOR | YELLOW / BLACK



CODE | 1066  
COLOR | ORANGE / WHITE



CODE | 1066  
COLOR | RED / BLACK



CODE | 1066  
COLOR | FUCHSIA / WHITE



CODE | 1066  
COLOR | L.GREEN / BLACK



CODE | 1066  
COLOR | TURQ / WHITE



CODE | 1066  
COLOR | BLACK / ORANGE

# 2000 PLAIN POLO (26 T/C SINGLE KNIT)

SIZES | S/M/L/XL/2XL/3XL



CODE | 2000  
COLOR | NAVY / ORANGE



CODE | 2000  
COLOR | ORANGE / BLACK



CODE | 2000  
COLOR | ROYAL BLUE / BLACK



CODE | 2000  
COLOR | R.MAROON / BLACK

# 2816 CUT & SEW POLO (26 T/C SINGLE KNIT)

SIZES | XS/S/M/L/XL/2XL/3XL



CODE | 2816  
COLOR | BLACK / WHITE / RED



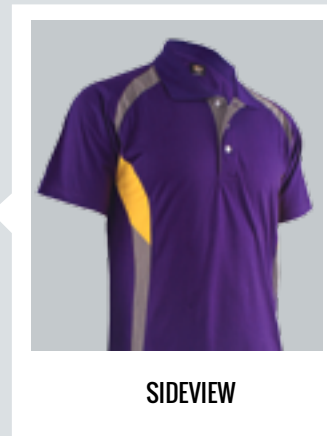
CODE | 2816  
COLOR | RED / WHITE / BLACK



CODE | 2816  
COLOR | FUCHSIA / GREY / NAVY



CODE | 2816  
COLOR | D.PURPLE / GREY / YELLOW



SIDEVIEW



# 1038 CUT & SEW V NECK (30 T/C SINGLE KNIT)

SIZES | S/M/L/XL/2XL/3XL



CODE | 1038  
COLOR | WHITE / ROYAL BLUE

CODE | 1038  
COLOR | YELLOW / BLACK



CODE | 1038  
COLOR | ORANGE / BLACK

CODE | 1038  
COLOR | RED / NAVY



CODE | 1038  
COLOR | LGREEN / BLACK

CODE | 1038  
COLOR | TURQ / WHITE



CODE | 1038  
COLOR | BLACK / ORANGE

CODE | 1038  
COLOR | NAVY / RED

# 2520 POLO WITH PIPING (26 T/C SINGLE KNIT)

SIZES | S/M/L/XL/2XL/3XL



CODE | 2520  
COLOR | BEIGE / MAROON



CODE | 2520  
COLOR | LGREEN / NAVY



CODE | 2520  
COLOR | FUCHSIA / NAVY



CODE | 2520  
COLOR | NAVY / RED



# 2093 SHORT / LONG SLEEVE POLO (26 T/C SINGLE KNIT)

SIZES | S / M / L / XL / 2XL / 3XL



CODE | 2093 S/SLEEVE  
COLOR | MARIGOLD / BLACK

CODE | 2093 L/SLEEVE  
COLOR | MARIGOLD / BLACK



CODE | 2093 S/SLEEVE  
COLOR | RED / WHITE

CODE | 2093 L/SLEEVE  
COLOR | RED / WHITE



CODE | 2093 S/SLEEVE  
COLOR | L.GREEN / WHITE

CODE | 2093 L/SLEEVE  
COLOR | L.GREEN / WHITE



CODE | 2093 S/SLEEVE  
COLOR | C.BLUE / WHITE

CODE | 2093 L/SLEEVE  
COLOR | C.BLUE / WHITE

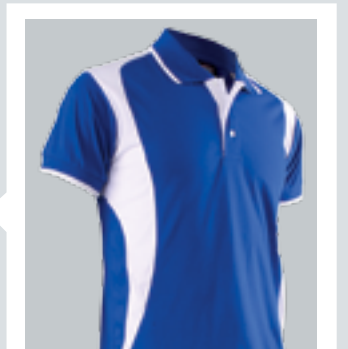


CODE | 2093 S/SLEEVE  
COLOR | BLACK / ORANGE

CODE | 2093 L/SLEEVE  
COLOR | BLACK / ORANGE



CODE | 2093 L/SLEEVE  
COLOR | ROYAL BLUE / WHITE



SIDEVIEW

CODE | 2093 S/SLEEVE  
COLOR | ROYAL BLUE / WHITE

# 1709 CUT & SEW ROUND NECK (30 T/C SINGLE KNIT)

SIZES | S/M/L/XL/2XL/3XL



CODE | 1709  
COLOR | DK.TURQ / WHITE



CODE | 1709  
COLOR | BLACK / YELLOW



CODE | 1709  
COLOR | L.GREEN / BLACK



CODE | 1709  
COLOR | RED / NAVY



CODE | 1709  
COLOR | DK.PURPLE / BLACK

# 2085 CUT & SEW POLO (26 T/C SINGLE KNIT)

SIZES | S/M/L/XL/2XL/3XL



CODE | 2085  
COLOR | C.BLUE / NAVY / WHITE



CODE | 2085  
COLOR | MARIGOLD / BLACK / WHITE



CODE | 2085  
COLOR | BLACK / ORANGE / WHITE



CODE | 2085  
COLOR | RED / NAVY / WHITE



CODE | 2085  
COLOR | WHITE / NAVY / RED



# 2075 CUT & SEW POLO (26 T/C SINGLE KNIT)

SIZES | S/M/L/XL/2XL/3XL



CODE | 2075  
COLOR | DK.TURQ / NAVY



CODE | 2075  
COLOR | C.BLUE / WHITE



CODE | 2075  
COLOR | DK.PURPLE / BEIGE



CODE | 2075  
COLOR | BEIGE / NAVY



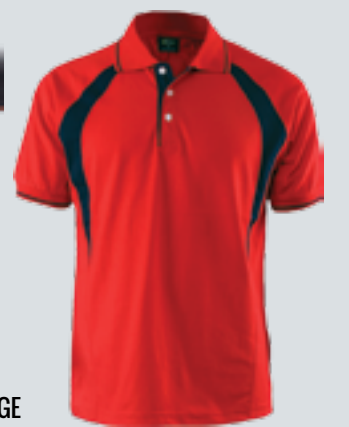
CODE | 2075  
COLOR | NAVY / WHITE



CODE | 2075  
COLOR | LGREEN / WHITE



CODE | 2075  
COLOR | BLACK / ORANGE



CODE | 2075  
COLOR | RED / NAVY



# LACOSTE

**T/C LACOSTE FABRIC  
POLYESTER 65% + COTTON 35%**

A kind of fashion fabric knitting style developed by "Lacoste" which is a French based company which uses a crocodile as their logo. It has an image similar to Honeycomb fabric while the surface provide a smoother sense. Widely used for tennis and casual wear.



# 2160 LACOSTE STANDARD POLO

SIZES | S/M/L/XL/2XL/3XL



CODE | 2160  
COLOR | WHITE

CODE | 2160  
COLOR | BEIGE

CODE | 2160  
COLOR | PINK



CODE | 2160  
COLOR | ORANGE

CODE | 2160  
COLOR | RED

CODE | 2160  
COLOR | FUCHSIA



CODE | 2183  
COLOR | WHITE

CODE | 2183  
COLOR | BLACK



CODE | 2183  
COLOR | PINK

CODE | 2183  
COLOR | RED



CODE | 2160  
COLOR | LGREEN

CODE | 2160  
COLOR | TURQ

CODE | 2160  
COLOR | DK.PURPLE



CODE | 2160  
COLOR | NAVY

CODE | 2160  
COLOR | BLACK



CODE | 2183  
COLOR | FUCHSIA

CODE | 2183  
COLOR | DK.PURPLE



CODE | 2183  
COLOR | LGREEN

CODE | 2183  
COLOR | TURQ



# 2572 LACOSTE CUT & SEW POLO

SIZES | XS/S/M/L/XL/2XL/3XL



CODE | 2572  
COLOR | BLACK / WHITE / YELLOW



CODE | 2572  
COLOR | RED / WHITE / NAVY



CODE | 2572  
COLOR | FUCHSIA / WHITE / BLACK



CODE | 2572  
COLOR | L.GREEN / WHITE / D.PURPLE



CODE | 2572  
COLOR | NAVY / WHITE / TURQ

# PK

## T/C PK FABRIC (HONEYCOMB) POLYESTER 65% + COTTON 35%

PK fabric is knitting in a way which makes it very absorbent. Compare to other kinds of fabric in same weight, honeycomb is relatively higher thickness with lower density due to its waffle like structure. Surface of honeycomb is textured rather like a waffle, and this waffle weave allow air to flow through so that it dries quick.



## 2101 PK PLAIN POLO (26 T/C PK)

SIZES | S/M/L/XL/2XL/3XL



CODE | 2101  
COLOR | WHITE



CODE | 2101  
COLOR | MELANGE GREY



CODE | 2101  
COLOR | RED



CODE | 2101  
COLOR | BLACK

## 2141 POLO WITH PIPING (26 T/C PK)

SIZES | S/M/L/XL/2XL/3XL



CODE | 2141  
COLOR | ORANGE / BLACK



CODE | 2141  
COLOR | RED / NAVY

## 2100 PK PLAIN POLO (26 T/C PK)

SIZES | S/M/L/XL/2XL/3XL



CODE | 2100  
COLOR | RED / NAVY



CODE | 2100  
COLOR | NAVY / RED



CODE | 2100  
COLOR | GOLDEN YELLOW / BLACK



CODE | 2100  
COLOR | BLACK / ORANGE



CODE | 2141  
COLOR | ROYAL BLUE / WHITE



CODE | 2141  
COLOR | BLACK / GOLDEN YELLOW

# 2588 CUT & SEW POLO (26 T/C PK)

SIZES | XS/S/M/L/XL/2XL/3XL



CODE | 2588  
COLOR | ORANGE / WHITE



CODE | 2588  
COLOR | RED / BLACK



CODE | 2588  
COLOR | DK.PURPLE / WHITE



CODE | 2588  
COLOR | NAVY / TURQ

# 2111 SHORT/LONG SLEEVE POLO (26 T/C PK)

SIZES | S/M/L/XL/2XL/3XL



CODE | 2111 S/SLEEVE  
COLOR | RED / NAVY

CODE | 2111 L/SLEEVE  
COLOR | RED / NAVY



CODE | 2111 S/SLEEVE  
COLOR | NAVY / RED

CODE | 2111 L/SLEEVE  
COLOR | NAVY / RED



CODE | 2111 S/SLEEVE  
COLOR | G.YELLOW / BLACK

CODE | 2111 L/SLEEVE  
COLOR | G.YELLOW / BLACK



CODE | 2111 S/SLEEVE  
COLOR | L.GREEN / NAVY

CODE | 2111 L/SLEEVE  
COLOR | L.GREEN / NAVY

# 2521 SHORT/LONG SLEEVE POLO WITH PIPING (30 T/C PK)

SIZES | S/M/L/XL/2XL/3XL

CODE | 2521 L/SLEEVE  
COLOR | ORANGE / BLACK



CODE | 2521 S/SLEEVE  
COLOR | ORANGE / BLACK

CODE | 2521 L/SLEEVE  
COLOR | BLACK / ORANGE



CODE | 2521 S/SLEEVE  
COLOR | BLACK / ORANGE

CODE | 2521 L/SLEEVE  
COLOR | LGREEN / NAVY



CODE | 2521 S/SLEEVE  
COLOR | LGREEN / NAVY



CODE | 2521 L/SLEEVE  
COLOR | RED / NAVY

CODE | 2521 S/SLEEVE  
COLOR | RED / NAVY



CODE | 2521 L/SLEEVE  
COLOR | ROYAL BLUE / WHITE

CODE | 2521 S/SLEEVE  
COLOR | ROYAL BLUE / WHITE



# 2121 SHORT/LONG SLEEVE POLO (26 T/C PK)

SIZES | S/M/L/XL/2XL/3XL



CODE | 2121 S/SLEEVE  
COLOR | TURQ / NAVY

CODE | 2121 L/SLEEVE  
COLOR | TURQ / NAVY



CODE | 2121 S/SLEEVE  
COLOR | NAVY / ORANGE

CODE | 2121 L/SLEEVE  
COLOR | NAVY / ORANGE



CODE | 2121 S/SLEEVE  
COLOR | RED / NAVY

CODE | 2121 L/SLEEVE  
COLOR | RED / NAVY



CODE | 2121 S/SLEEVE  
COLOR | BEIGE / NAVY

CODE | 2121 S/SLEEVE  
COLOR | C.BLUE / WHITE

# 2079 POLO WITH TIPPING & PIPING (26 T/C PK)

SIZES | S/M/L/XL/2XL/3XL



CODE | 2079  
COLOR | DK.BEIGE / ORANGE



CODE | 2079  
COLOR | DK.BEIGE / R.MAROON



CODE | 2079  
COLOR | DK.BEIGE / NAVY



CODE | 2079  
COLOR | NAVY / L.GREEN



# 2135 POLO WITH PIPING ON SHOULDER (30 T/C PK)

SIZES | S/M/L/XL/2XL/3XL



CODE | 2135 S/SLEEVE  
COLOR | MARIGOLD / BLACK

CODE | 2135 L/SLEEVE  
COLOR | MARIGOLD / BLACK



CODE | 2135 S/SLEEVE  
COLOR | RED / NAVY

CODE | 2135 L/SLEEVE  
COLOR | RED / NAVY



CODE | 2135 S/SLEEVE  
COLOR | KHAKI / NAVY

CODE | 2135 L/SLEEVE  
COLOR | KHAKI / NAVY



CODE | 2135 S/SLEEVE  
COLOR | NAVY / L.GREEN

CODE | 2135 L/SLEEVE  
COLOR | NAVY / L.GREEN

# 2088 CUT & SEW POLO (26 T/C PK)

SIZES | S/M/L/XL/2XL/3XL



CODE | 2088  
COLOR | GOLDEN YELLOW / BLACK



CODE | 2088  
COLOR | RED / WHITE



CODE | 2088  
COLOR | L.GREEN / BLACK



CODE | 2088  
COLOR | BLACK / RED



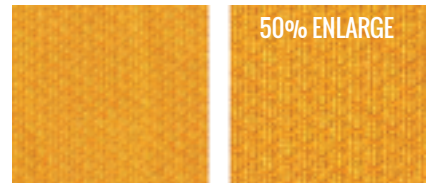
# MICROFIBER

**MICROFIBER (QUICK DRY)**

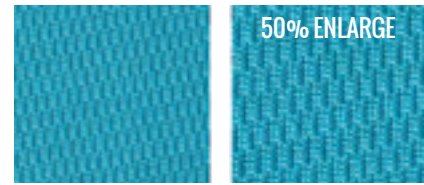
**MICROFIBER 100%**

Well known as Dri-Fit or Quick Dry, microfiber is the synthetic fiber finer than silk which makes the fabric generally lightweight, resilient or resist wrinkling, soft and have a luxurious drape on body, retain shape, and also resist pilling. Its water absorbant and quick dry function makes it a very popular choice for sport wear material. Also, it is relatively strong and durable in relation to other fabrics of similar weight.

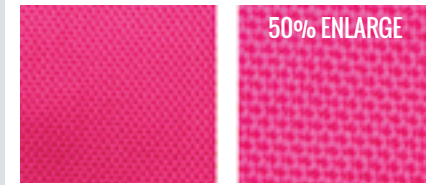
# MICROFIBER MATERIAL



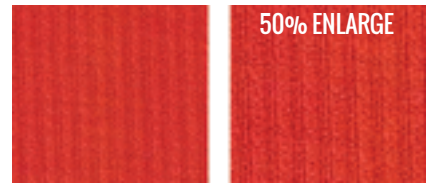
MICROFIBER 3098



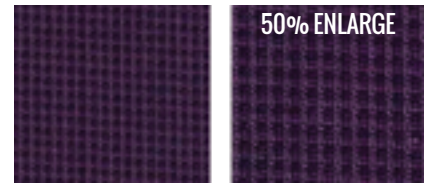
MICROFIBER 4090



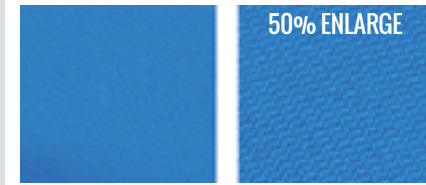
MICROFIBER LACOSTE



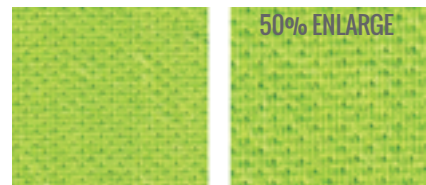
MICROFIBER OTTOMAN



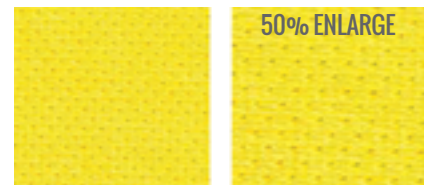
MICROFIBER MINI WAFFLE



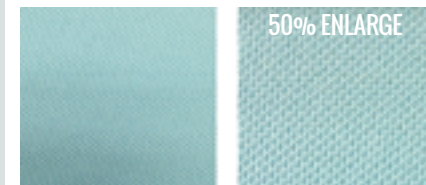
MICROFIBER TWILL



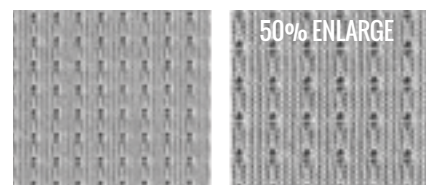
MICROFIBER MINI EYELET 0848



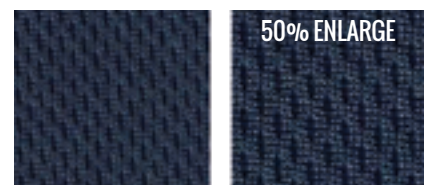
MICROFIBER 0866



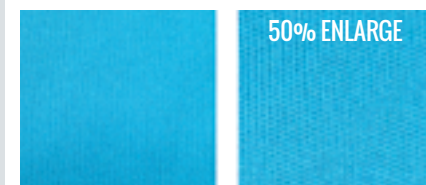
MICROFIBER FLAT KNITTED (KK 020)



MICROFIBER COOL BREEZE CUTE MESH 058



MICROFIBER KM286



MICROFIBER INTERLOCK



# 2260 SIMPLE POLO (MICROFIBER LACOSTE)

SIZES | XS/S/M/L/XL/2XL/3XL



CODE | 2260  
COLOR | YELLOW / WHITE



CODE | 2260  
COLOR | RUSTY / BLACK



CODE | 2260  
COLOR | RED / WHITE



CODE | 2260  
COLOR | FUCHSIA / BLACK



CODE | 2260  
COLOR | LGREEN / WHITE



CODE | 2260  
COLOR | CYAN / WHITE



CODE | 2260  
COLOR | DK.PURPLE / LGREEN



CODE | 2260  
COLOR | BLACK / RED

# 2283 SIMPLE MINI POLO (MICROFIBER LACOSTE)

SIZES | S/M/L/XL/2XL/3XL



CODE | 2283  
COLOR | YELLOW / WHITE



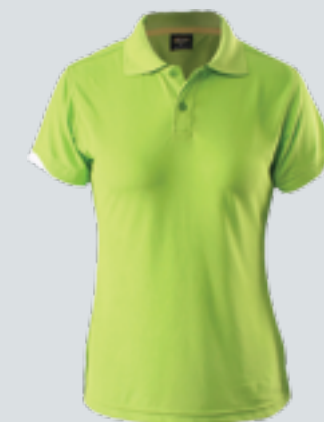
CODE | 2283  
COLOR | PARADISE PINK / WHITE



CODE | 2283  
COLOR | FUCHSIA / BLACK



CODE | 2283  
COLOR | RED / WHITE



CODE | 2283  
COLOR | LGREEN / WHITE



CODE | 2283  
COLOR | CYAN / WHITE



CODE | 2283  
COLOR | DK.PURPLE / LGREEN



CODE | 2283  
COLOR | BLACK / RED

# 1796N CUT & SEW V NECK (M.E INTERLOCK)

SIZES | XS/S/M/L/XL/2XL/3XL



CODE | 1796N  
COLOR | RED / BLACK



CODE | 1796N  
COLOR | ORANGE / BLACK



CODE | 1796N  
COLOR | GREY / NAVY



CODE | 1796N  
COLOR | BLACK / FUCHSIA



CODE | 1796N  
COLOR | ROYAL / LT. YELLOW





# 1815 MICROFIBER PLAIN ROUND NECK (M.E KM286)

SIZES | S/M/L/XL/2XL/3XL



CODE | 1815  
COLOR | WHITE



CODE | 1815  
COLOR | FLORESCENT YELLOW



CODE | 1815  
COLOR | RED



CODE | 1815  
COLOR | ROYAL BLUE



CODE | 1815  
COLOR | NAVY



CODE | 1815  
COLOR | BLACK

# 1018 CUT & SEW ROUND NECK (M.F. 4090)

SIZES | S/M/L/XL/2XL/3XL



CODE | 1018  
COLOR | WHITE / ORANGE



CODE | 1018  
COLOR | RED / NAVY



CODE | 1018  
COLOR | C.BLUE / WHITE



CODE | 1018  
COLOR | NAVY / RED



CODE | 1018  
COLOR | BLACK / ORANGE

# 2068 MICROFIBER ZIP MOCK NECK (M.F. 4090)

SIZES | S/M/L/XL/2XL/3XL



CODE | 2068  
COLOR | ORANGE / WHITE



CODE | 2068  
COLOR | RED / WHITE



CODE | 2068  
COLOR | C.BLUE / WHITE



CODE | 2068  
COLOR | NAVY / WHITE



CODE | 2068  
COLOR | BLACK / WHITE



# 1804 CUT & SEW ROUND NECK (M.F TWILL)

SIZES | XS / S / M / L / XL / 2XL / 3XL



CODE | 1804  
COLOR | YELLOW / BLACK / WHITE



CODE | 1804  
COLOR | L.GREEN / NAVY / WHITE



CODE | 1804  
COLOR | MAGENTA / BLACK / GREY



CODE | 1804  
COLOR | DK.PURPLE / GREY / WHITE



CODE | 1804  
COLOR | NAVY / RED / WHITE



CODE | 1804  
COLOR | BLACK / DK.TURQ / WHITE



# 2010 CUT & SEW POLO (M.F. OTTOMAN)

SIZES | S/M/L/XL/2XL/3XL



CODE | 2010  
COLOR | YELLOW / BLACK



CODE | 2010  
COLOR | RED / NAVY



CODE | 2010  
COLOR | NAVY / RED



CODE | 2055  
COLOR | MARIGOLD / BLACK /  
WHITE



CODE | 2055  
COLOR | RED / BLACK / WHITE



CODE | 2055  
COLOR | NAVY / RED / WHITE



CODE | 2010  
COLOR | ROYAL BLUE / WHITE



CODE | 2010  
COLOR | MAROON / GREY



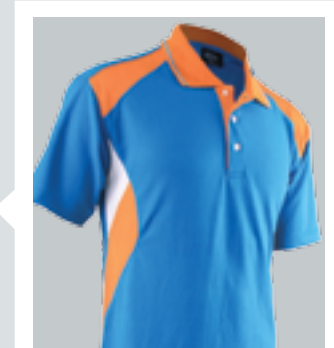
BACKVIEW



CODE | 2055  
COLOR | L.GREEN / NAVY / WHITE



CODE | 2055  
COLOR | TURQ / MARIGOLD /  
WHITE



SIDEVIEW

# 2055 CUT & SEW POLO (M.F. 3098)

SIZES | S/M/L/XL/2XL/3XL

# 2714 CUT & SEW POLO (M.F. FLAT KNITTED)

SIZES | XS/S/M/L/XL/2XL/3XL



CODE | 2714  
COLOR | WHITE / HOT PINK



CODE | 2714  
COLOR | YELLOW / BLACK



CODE | 2714  
COLOR | L.GREEN / WHITE



CODE | 2714  
COLOR | RED / WHITE



CODE | 2714  
COLOR | NAVY / C.BLUE



# 2522 CUT & SEW POLO WITH PIPING (M.E MINI WAFFLE)

SIZES | S/M/L/XL/2XL/3XL



CODE | 2522  
COLOR | ORANGE / BLACK



CODE | 2522  
COLOR | RED / NAVY



CODE | 2522  
COLOR | ROYAL BLUE / WHITE



CODE | 2050  
COLOR | WHITE / ROYAL BLUE



CODE | 2050  
COLOR | RED / BLACK



CODE | 2050  
COLOR | BLACK / ORANGE



CODE | 2522  
COLOR | DK.PURPLE / GREY



CODE | 2522  
COLOR | NAVY / L.GREEN



CODE | 2050  
COLOR | PARADISE GREEN / WHITE



CODE | 2050  
COLOR | LT.BLUE / WHITE



CODE | 2050  
COLOR | ROYAL BLUE / WHITE

# 2050 CUT & SEW POLO (M.E 4090)

SIZES | S/M/L/XL/2XL/3XL

# 2069N CUT & SEW POLO (M.F 0866)

SIZES | S/M/L/XL/2XL/3XL



CODE | 2069N  
COLOR | WHITE / RED



CODE | 2069N  
COLOR | RED / WHITE



CODE | 2069N  
COLOR | LGREEN / GREY



CODE | 2069N  
COLOR | ROYAL / WHITE



CODE | 2069N  
COLOR | BLACK / YELLOW





# 2724 UNBALANCE CUT & SEW POLO (M.E TWILL)

SIZES | XS / S / M / L / XL / 2XL / 3XL



CODE | 2724  
COLOR | MAGENTA / BLACK / GREY



CODE | 2724  
COLOR | L.GREEN / WHITE / NAVY



CODE | 2724  
COLOR | R.BLUE / BLACK / WHITE



CODE | 2724  
COLOR | NAVY / RED / WHITE



CODE | 2724  
COLOR | BLACK / YELLOW / WHITE

# 2830 CUT & SEW ZIP MOCK NECK (M.F TWILL)

SIZES | XS/S/M/L/XL/2XL/3XL



CODE | 2830  
COLOR | YELLOW / LT. GREY



CODE | 2830  
COLOR | RED / WHITE



CODE | 2830  
COLOR | LGREEN / R.BLUE



CODE | 2830  
COLOR | R.BLUE / WHITE



CODE | 2830  
COLOR | PURPLE / YELLOW



CODE | 2830  
COLOR | BLACK / RED





# 2802 CUT & SEW MANDARIN COLLAR TEE WITH ZIP (M.F 4090)

SIZES | S/M/L/XL/2XL/3XL



CODE | 2802  
COLOR | YELLOW



CODE | 2802  
COLOR | ORANGE



CODE | 2802  
COLOR | RED



CODE | 2802  
COLOR | L.GREEN



CODE | 2802  
COLOR | TURQ



CODE | 2802  
COLOR | PURPLE

# 2708 CUT & SEW POLO WITH PIPING (MINI EYELET)

SIZES | S/M/L/XL/2XL/3XL



CODE | 2708  
COLOR | ORANGE / BLACK



CODE | 2708  
COLOR | RED / NAVY



CODE | 2708  
COLOR | L.GREEN / NAVY



CODE | 2708  
COLOR | TURQ / WHITE



CODE | 2708  
COLOR | BLACK / ORANGE

# 1708 ADULT & CHILDREN CUT & SEW ROUND NECK WITH PIPING (MINI EYELET)

CHILDREN SIZES | 28/30/32/34/36 ADULT SIZES | S/M/L/XL/2XL/3XL



CODE | 1708  
COLOR | ORANGE / BLACK



CODE | 1708  
COLOR | RED / NAVY



CODE | 1708  
COLOR | L.GREEN / NAVY



CODE | 1708  
COLOR | TURQ / WHITE



CODE | 1708  
COLOR | BLACK / ORANGE





# MUSLIMAH

SIZES | S / M / L / XL / 2XL / 3XL

# MUSLIMAH

26 T/C SINGLE KNIT  
POLYESTER 65% + COTTON 35%



CODE | 8022  
COLOR | HOT PINK / BLACK



CODE | 8022  
COLOR | L.GREEN / DK.GREEN



CODE | 8022  
COLOR | D.PURPLE / PINK



CODE | 8022  
COLOR | NAVY / LT. PURPLE

# MUSLIMAH

SIZES | S / M / L / XL / 2XL / 3XL



CODE | 8001  
COLOR | MARIGOLD / BEIGE



CODE | 8003  
COLOR | R.MAROON / BEIGE



CODE | 8008  
COLOR | BLACK / ORANGE



CODE | 8004  
COLOR | MAROON / PINK



CODE | 8004  
COLOR | P.GREEN / L.GREEN



CODE | 8004  
COLOR | ROYAL BLUE / C.BLUE



CODE | 8001  
COLOR | DK.PURPLE / PINK



CODE | 8003  
COLOR | BLACK / MARIGOLD



CODE | 8008  
COLOR | ROYAL / C.BLUE



CODE | 8005  
COLOR | ORANGE / BLACK



CODE | 8005  
COLOR | NAVY / TURQ



CODE | 8005  
COLOR | DK.PURPLE / BLACK

# MUSLIMAH

SIZES | S / M / L / XL / 2XL / 3XL



CODE | 8009  
COLOR | BLACK / LGREEN



CODE | 8010  
COLOR | G.YELLOW / BLACK



CODE | 8011  
COLOR | R.MAROON / PINK / BLACK



CODE | 8012  
COLOR | DK.PURPLE / PURPLE



CODE | 8021 [NEW]  
COLOR | FUCHSIA / PINK



CODE | 8009  
COLOR | NAVY / RED



CODE | 8010  
COLOR | JACARANDA / NAVY



CODE | 8011  
COLOR | LGREEN / GREEN / BLACK



CODE | 8012  
COLOR | BLACK / RED



CODE | 8021 [NEW]  
COLOR | NAVY / TURQ



CODE | 8021 [NEW]  
COLOR | BLACK / ORANGE

**2545 POLO  
WITH PIPING  
(45 T/C INTERLOCK)**

# ENZO CLASSIC

The establishment of Enzo Classic is to satisfy our customer's increasing need on high end product. Enzo Classic is strongly backed up by real value: quality, functionality and price. This production line provide simple but stylish and comfortable apparel.



SIZES | S / M / L / XL / 2XL / 3XL



CODE | 2545  
COLOR | L.GREEN / WHITE



CODE | 2545  
COLOR | DK.TURQ / WHITE



CODE | 2545  
COLOR | FUCHSIA / WHITE



CODE | 2545  
COLOR | BLACK / YELLOW

# 1818 PLAIN ROUND NECK (QUICK DRY COTTON)

SIZES | XS/S/M/L/XL/2XL/3XL



CODE | 1818  
COLOR | WHITE



CODE | 1818  
COLOR | YELLOW



CODE | 1818  
COLOR | RED



CODE | 1818  
COLOR | PRO GREEN



CODE | 1818  
COLOR | M.BLUE



CODE | 1818  
COLOR | BLACK

EXTRA COMFORT + WRINKLE FREE

# QUICK DRY COTTON

## ONE FABRIC, 2 FUNCTIONS

100% cotton is the most popular fabric in premium apparel market due to its comfortable feel and pleasantly cool function. However, due to its natural characteristic of wrinkled, user will have to iron its before wearing. Enzo solve this annoying problem by introducing the WRINKLE FREE COTTON.

Surface of this Wrinkle Free Cotton is structured with cotton while underside is microfiber.

Unlike the traditional wrinkle free cotton which heavily using chemical finish, Enzo Wrinkle Free Cotton adopt microfiber underside to restrict the movement of cotton fiber on surface in order to get wrinkle free result without chemical finishing. At the same times, microfiber underside will absorb moisture while contact with the skin which provide quick dry and cool feeling.



# 2573 CUT & SEW POLO (45 T/C INTERLOCK)

SIZES | XS/S/M/L/XL/2XL/3XL



CODE | 2573  
COLOR | WHITE / DK. TURQ



CODE | 2573  
COLOR | NAVY / OLIVE GREEN



CODE | 2573  
COLOR | L.GREEN / NAVY



SIDEVIEW



CODE | 2573  
COLOR | RED / WHITE



CODE | 2573  
COLOR | DK.TURQ / NAVY



CODE | 2573  
COLOR | BLACK / FUCHSIA



# 2073 CUT & SEW POLO (45 T/C INTERLOCK)

SIZES | S/M/L/XL/2XL/3XL



CODE | 2073  
COLOR | BEIGE / NAVY



CODE | 2073  
COLOR | ORANGE / BLACK



CODE | 2073  
COLOR | RED / BLACK



CODE | 2073  
COLOR | ROYAL BLUE / ORANGE

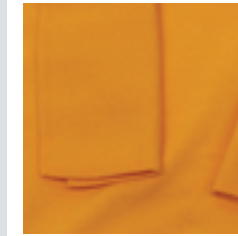


CODE | 2073  
COLOR | NAVY / RED

# 40 FULLY COMB COTTON(WITH COLOR MATCHING COLLAR) FOR CUSTOM MADE ONLY



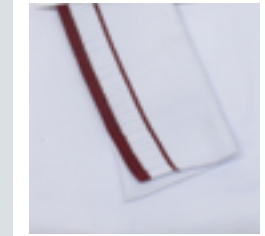
40 FC COTTON  
GREY BLUE



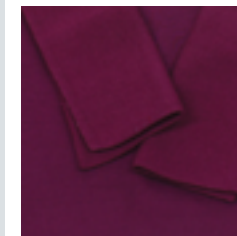
40 FC COTTON  
MARIGOLD



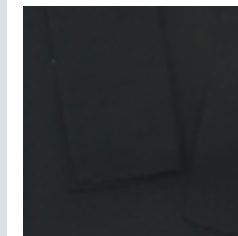
40 FC COTTON  
COLLEGE NAVY  
COLLAR: FB04 NAVY/RED



40 FC COTTON  
WHITE  
COLLAR: FB01 WHITE /MAROON



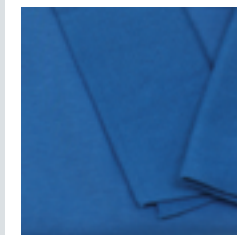
40 FC COTTON  
FUCHSIA



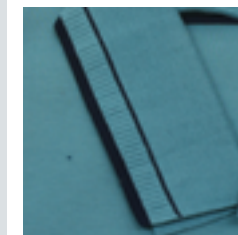
40 FC COTTON  
BLACK



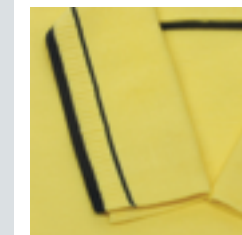
40 FC COTTON  
KHAKI  
COLLAR: FB03 KHAKI/BLACK



40 FC COTTON  
DARK TURQ



40 FC COTTON  
PRO GREEN  
COLLAR: FB05 PRO GREEN/NAVY



40 FC COTTON  
SOFT YELLOW  
COLLAR: FB02 S. YELLOW/NAVY

# 9001 SOCCER SHORT

SIZES | S/M/L/XL/2XL/3XL



CODE | 9001  
COLOR | WHITE



CODE | 9001  
COLOR | RED



CODE | 9001  
COLOR | ROYAL BLUE



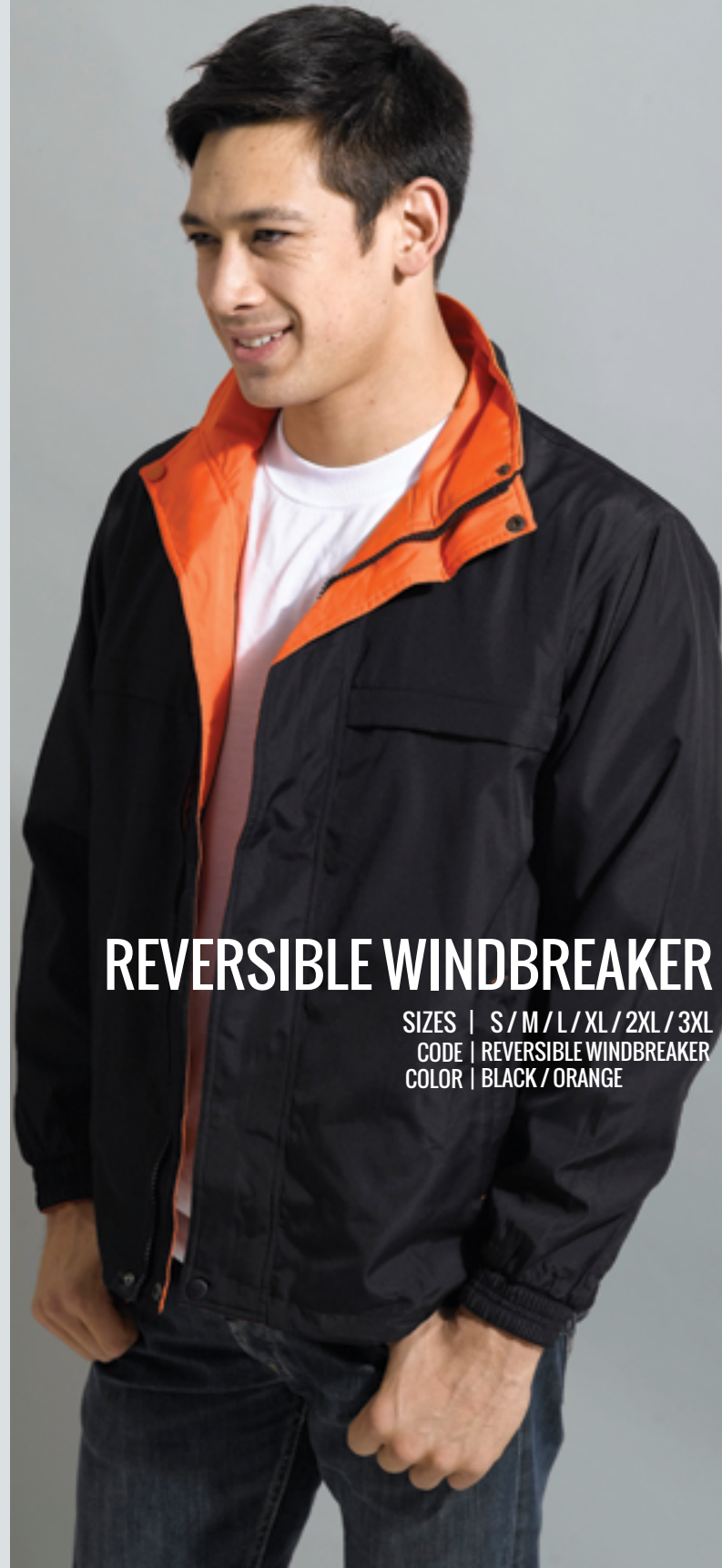
CODE | 9001  
COLOR | BLACK

CODE | OFFICE JACKET  
COLOR | BLACK



## OFFICE JACKET

CODE | REVERSIBLE WINDBREAKER  
COLOR | NAVY / KHAKI



## REVERSIBLE WINDBREAKER

SIZES | S/M/L/XL/2XL/3XL  
CODE | REVERSIBLE WINDBREAKER  
COLOR | BLACK / ORANGE





# COTTON WOOL



# COTTON WOOL PLAIN CAP



# MICROFIBRE CAP



# CAPS



# COTTON WOOL



# COTTON BRUSH

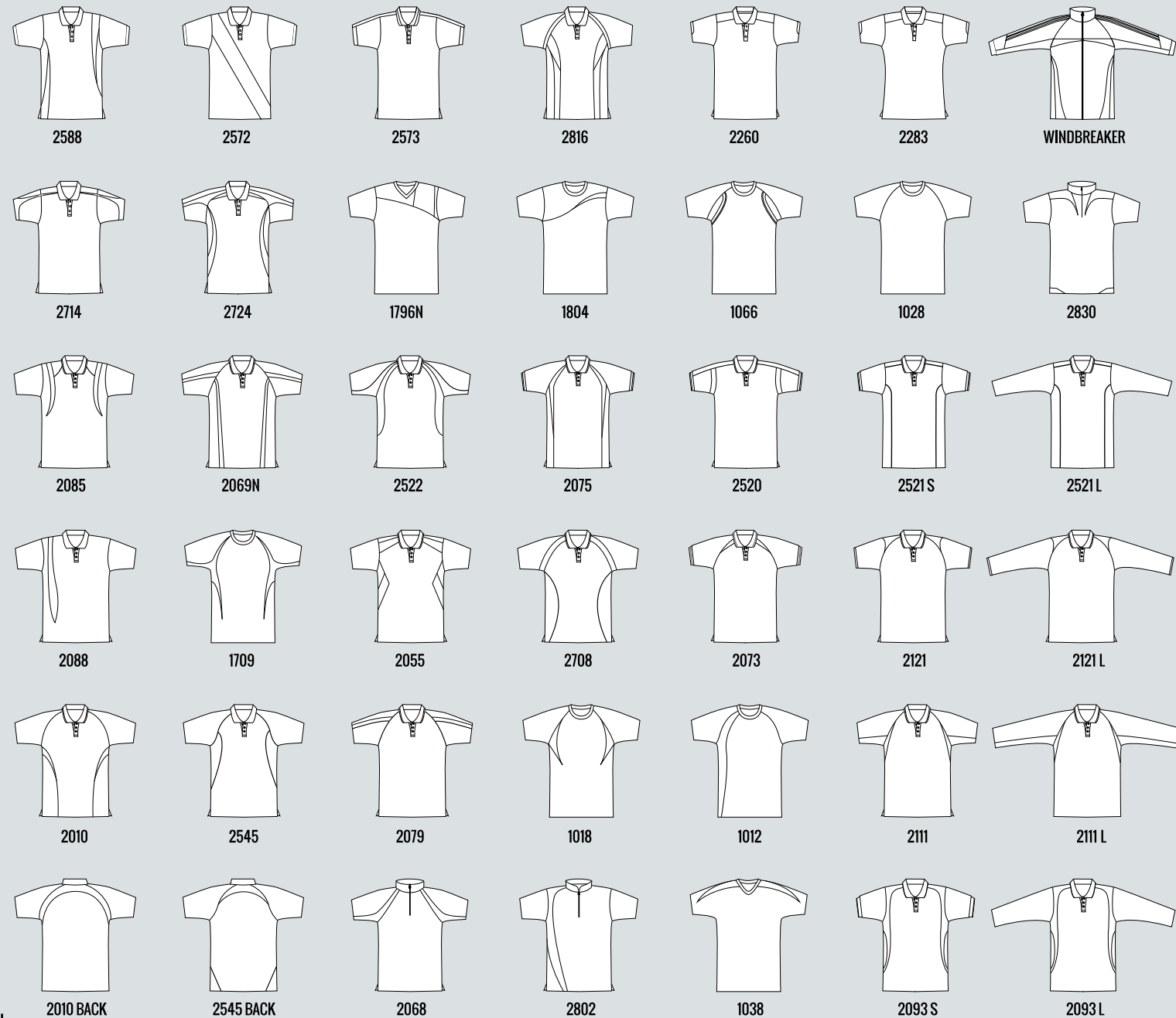


# COTTON BRUSH



# MICROFIBRE CAP

# PRODUCTS DETAIL



# MEASUREMENTS

## POLO & ROUND NECK

SIZE	SHOULDER	CHEST	LENGTH
S	18"	38"	27"
M	19"	40"	28"
L	20"	42"	29"
XL	21"	44"	30"
2XL	22"	46"	31"
3XL	23"	48"	32"

## MUSLIMAH

SIZE	SHOULDER	CHEST	LENGTH
S	18"	38"	32"
M	19"	40"	33"
L	20"	42"	34"
XL	21"	44"	35"
2XL	22"	46"	36"
3XL	23"	48"	37"

## MINI POLO

SIZE	SHOULDER	CHEST	LENGTH
S	13"	32"	20"
M	14"	34"	21"
L	15"	36"	22"
XL	16"	38"	23"
2XL	17"	40"	24"
3XL	18"	42"	25"

## CHILDREN

SIZE	SHOULDER	LENGTH
26	26"	27"
28	28"	28"
30	30"	29"
32	32"	30"
34	34"	31"
36	36"	32"

# MICROFIBER CARE TIPS

- SUGGEST TO WASH IN A LAUNDRY BAG TO PREVENT SNAG YARN.
- FOR MIX LOADS, WASH WITH NON-LINTING SYNTHETIC MATERIAL.
- DO NOT USE SOFTENER WHEN WASHING, IT WOULD CLOGGING UP THE FABRIC TO BECOME LESS EFFECTIVE.
- USE ONLY COLD OR WARM WATER WITH MILD DETERGENT TO WASH.
- DO NOT BE DRIED DIRECTLY UNDER SUN.
- USE ONLY LOW TO MEDIUM TEMPERATURE DURING IRONNING IF NECESSARY



Product Catalogue Vol. 05 (2014-2015)  
 Copy right 2014. All rights reserved by Enzo marketing Sdn. Bhd.  
[www.enzo.com.my](http://www.enzo.com.my)



*i* Enzo